

Client



Source

**Mandarine, Red** (*Citrus reticulata Blanco*)

EVS-2026-NG-15

Sample

**Mandarine, Red** (*Citrus reticulata Blanco*)

Batch #: BR-59542  
 Type: Essential Oil  
 Origin: Brazil

Client

**NATURE'S GIFT**

Properties

RI: NT  
 SG: NT

Primary

65.26% | Limonene  
 19.44% | gamma-Terpinene  
 2.86% | alpha-Pinene  
 2.85% | Myrcene

Result

**Pass**

Meets specifications

ANALYSIS SUMMARY

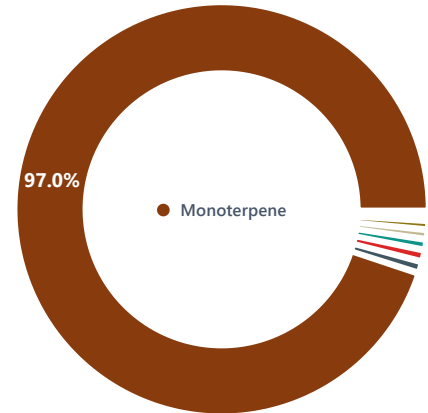
Total Compounds: 32

Lab

**Essential Validation Services**

EO Testing Lab

240 Goose Hollow Road  
 Berthoud, Colorado 80513  
 Phone: (317) 361-5044  
[essentialvalidationservices.com](http://essentialvalidationservices.com)

**CHEMICAL FAMILY BREAKDOWN****TOTAL CONTENT IDENTIFIED**

100.0% identified

Conclusion

**PROFESSIONAL ANALYSIS SUMMARY**

Analysis of this Mandarin, Red (*Citrus reticulata Blanco*) Essential Oil sample was conducted against the Mandarin (*Citrus reticulata Blanco*) standard specification. The chromatographic analysis accounted for 100.0% of the total sample composition. All major constituents were found to be within the expected ranges specified in the standard. No adulterants, diluents, or contaminants were detected via this method. This oil meets the expected profile for genuine Mandarin (*Citrus reticulata Blanco*).

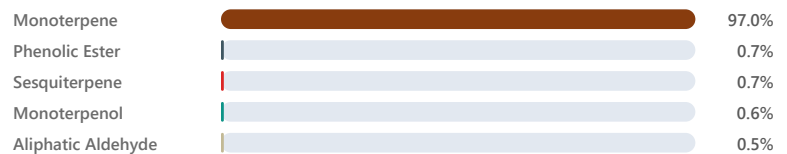
Adam Christensen • Mar 21, 2026

Adam Christensen

Analyst Signature

Date

Mar 21, 2026

**CHEMICAL FAMILY DISTRIBUTION**

Client



Source

**Mandarine, Red** (*Citrus reticulata Blanco*)

EVS-2026-NG-15

### Expected vs. Detected Components

Comparison against EVS Internal Standard for Mandarin, Green (*Citrus reticulata Blanco*) - Essential Validation Services

Compound	Expected	Detected	Status	Family
1 Limonene	62.00-75.00%	65.26%	✓	Monoterpene
2 gamma-Terpinene	16.00-23.00%	19.44%	✓	Monoterpene
3 alpha-Pinene	1.30-3.50%	2.86%	✓	Monoterpene
4 Myrcene	1.00-2.70%	2.85%	!	Monoterpene
5 beta-Pinene	0.50-2.20%	2.03%	✓	Monoterpene
6 para-Cymene	0.00-1.80%	1.18%	✓	Monoterpene
7 Methyl N-methyl anthranilate	0.20-1.00%	0.65%	✓	Phenolic Ester
8 alpha-Sinensal	0.00-0.80%	-	✓	Sesquiterpene Aldehyde
9 Octanal	0.01-0.30%	0.16%	✓	Aliphatic Aldehyde
10 Linalool	0.05-0.30%	0.15%	✓	Monoterpenol
11 Decanal	0.01-0.30%	0.21%	✓	Aliphatic Aldehyde

### Professional Analysis Summary

#### 1 Sample Analysis

This Mandarin, Red (*Citrus reticulata Blanco*) sample shows 32 detected compounds (32 identified, 100.0% rate).

#### 2 Major Components

Predominant: **Limonene** (65.3%), **gamma-Terpinene** (19.4%), **alpha-Pinene** (2.9%), +5 others.

#### 3 Chemical Profile

10 chemical families: Monoterpene, Phenolic Ester, Sesquiterpene, +7 others.

#### 4 Quality Assessment

Sample **meets** specifications for Mandarin, Red (*Citrus reticulata Blanco*).

Client



Source

**Mandarine, Red** (*Citrus reticulata Blanco*)

EVS-2026-NG-15

Total Percentage:

**100.01%**

Number	RT	Area %	Compound Name	Chemical Family
1	10.37	1.10%	alpha-Thujene	Monoterpene
2	10.66	2.86%	alpha-Pinene ✓ (1.30%-3.50%)	Monoterpene
3	11.16	0.02%	Camphene	Monoterpene
4	11.82	0.38%	Sabinene	Monoterpene
5	12.03	2.03%	beta-Pinene ✓ (0.50%-2.20%)	Monoterpene
6	12.17	2.85%	Myrcene ⚠ (1.00%-2.70%)	Monoterpene
7	12.53	0.16%	Octanal ✓ (0.01%-0.30%)	Aliphatic Aldehyde
8	12.84	0.10%	alpha-Phellandrene	Monoterpene
9	13.25	0.59%	alpha-Terpinene	Monoterpene
10	13.52	1.18%	para-Cymene ✓ (0.00%-1.80%)	Monoterpene
11	13.78	65.26%	Limonene ✓ (62.00%-75.00%)	Monoterpene
12	14.17	0.03%	(E)-beta-Ocimene	Monoterpene
13	14.79	19.44%	gamma-Terpinene ✓ (16.00%-23.00%)	Monoterpene
14	15.10	0.03%	trans-Sabinene hydrate	Monoterpenol
15	15.93	1.16%	Isoterpinolene	Monoterpene
16	16.14	0.15%	Linalool ✓ (0.05%-0.30%)	Monoterpenol
17	16.29	0.11%	Nonanal	Aliphatic Aldehyde
18	18.32	0.06%	Citronellal	Monoterpene Aldehyde
19	19.64	0.05%	Terpinen-4-ol	Monoterpenol
20	20.14	0.21%	alpha-Terpineol	Monoterpenol
21	20.48	0.21%	Decanal ✓ (0.01%-0.30%)	Aliphatic Aldehyde
22	21.39	0.02%	Citronellol	Monoterpenol
23	23.78	0.06%	Perilla aldehyde	Monoterpene Aldehyde
24	24.13	0.10%	Thymol	Monoterpenol
25	24.31	0.01%	Limonen-10-ol	Monoterpenol
26	24.81	0.02%	Undecanal	Sesquiterpene Aldehyde
27	29.10	0.06%	1-Tetradecene	Alkene
28	29.44	0.65%	Methyl N-methyl anthranilate ✓ (0.20%-1.00%)	Phenolic Ester
29	30.20	0.13%	beta-Caryophyllene	Sesquiterpene
30	33.22	0.52%	(E,E)-alpha-Farnesene	Sesquiterpene
31	42.57	0.44%	cis-beta-Santalol	Sesquiterpenol

Client		Source
--------	---	--------

**Mandarine, Red** (*Citrus reticulata Blanco*)

EVS-2026-NG-15

Number	RT	Area %	Compound Name	Chemical Family
32	62.29	0.02%	Pentacosane	Alkane

